

# QUARTZ **Gatekeeper**

## FEATURES SHEET

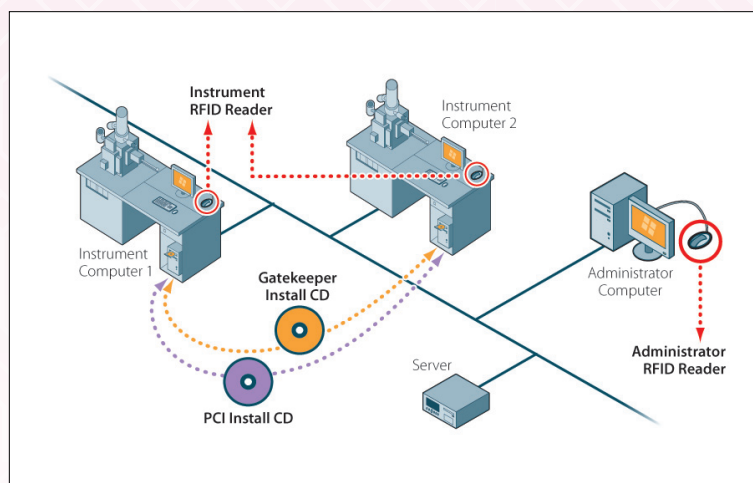
### KEY BENEFITS

- ▲ Easy, web-based advance booking
- ▲ Control who uses equipment & when
- ▲ Reduce damage to equipment
- ▲ Account easily for instrument usage

### INSTRUMENT ACCESS CONTROL

- ▲ Locks Instrument computer to prevent unauthorized use
- ▲ Unlock with User Name & Password or, optionally, with RFID card
- ▲ Instrument software can continue running while locked, eliminating lengthy start-up delay
- ▲ Instrument software can run in account intended by instrument manufacturer

### SYSTEM ARCHITECTURE



### KEY FEATURES

- ▲ Controls access to instrument computers
- ▲ Allows advance booking of instruments
- ▲ Produces reports of instrument bookings and actual usage
- ▲ Works with other Quartz PCI products to acquire and process data and make it available on-line

### RFID READER (OPTIONAL)

- ▲ Connects via USB interface
- ▲ Readers compatible with many building access card systems are available



### INSTRUMENT USAGE REPORTS

- ▲ Accessed via web application
- ▲ Select instruments, date range, uses
- ▲ Shows times booked and times actually used
- ▲ CSV format suitable for importation into Excel and other applications

Microsoft Excel - 2006\_11\_21\_instrument\_usage\_report.xls

The following table describes bookings and user login activity. Login time is recorded after a user unlocks an instrument workstation with a Username and Password and is a measure of how long a person has used an instrument. Note: [Hours = TotalMinutes / 60] and [Minutes = TotalMinutes MOD 60].

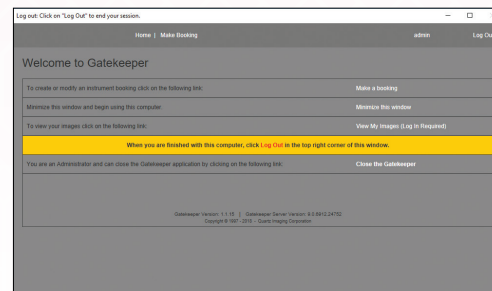
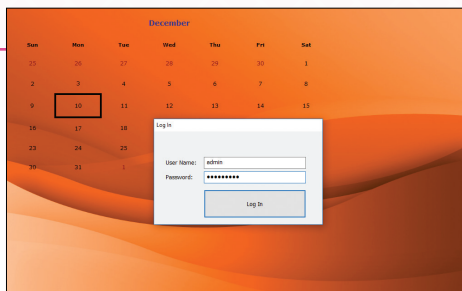
Booking Id	User Login Id	Instrument	Booking Start	Booking End	Elapsed Booking Time (Hours)	Elapsed Booking Time (Minutes)	Account	Elapsed Login
3	2	Admin	11/17/2006 3:00:00 PM	11/17/2006 4:00:00 PM	1	0	0	0
4	4	james	11/21/2006 6:00:00 PM	11/21/2006 7:00:00 PM	1	0	0	0
5	6	jdietz	11/20/2006 7:00:00 PM	11/20/2006 8:00:00 PM	1	0	0	0

The following table describes instrument logins for which no Bookings were made. For total elapsed login times, add the total elapsed login time in the table above with the total elapsed login time in this table. This will provide the total instrument login times for instrument logins with bookings and without. Note: [Hours = TotalMinutes / 60] and [Minutes = TotalMinutes MOD 60].

Instrument	User Login Id	Instrument	Instrument Log Start	Instrument Log End	Elapsed Login Time (Hours)	Elapsed Login Time (Minutes)
1	Admin	Default	11/15/2006 2:17:53 PM	11/15/2006 2:21:04 PM	0	3
2	Admin	Default	11/15/2006 2:23:00 PM	11/15/2006 2:23:46 PM	0	0

### ADVANCE BOOKING

- ▲ Web-based booking application
- ▲ Can specify additional information to collect, such as billing code
- ▲ Can specify booking interval (such as every 30 minutes, 1 hour etc.)



**QUARTZ IMAGING CORPORATION**  
FOR A FASTER, SMARTER LAB

6190 Agronomy Rd, Suite 406, Vancouver, BC Canada V6T 1Z3  
Phone: +1 (604) 488-3911 • Fax: +1 (604) 488-3922  
inform2@quartzimaging.com • www.quartzimaging.com  
Quartz Imaging Corporation is a member of Quartz Innovation Group.